



THE BANKS & FIELDS AT

# *Planter's*

**RIDGE**



# Planter's Ridge

## RIDGE

- Planter's Ridge is located in Kathleen, GA is zoned for:
- Matt Arthur Elementary
  - Perry Middle School
  - Veterans High School

- The Acres
- The Hallows
- The Banks
- The Fields



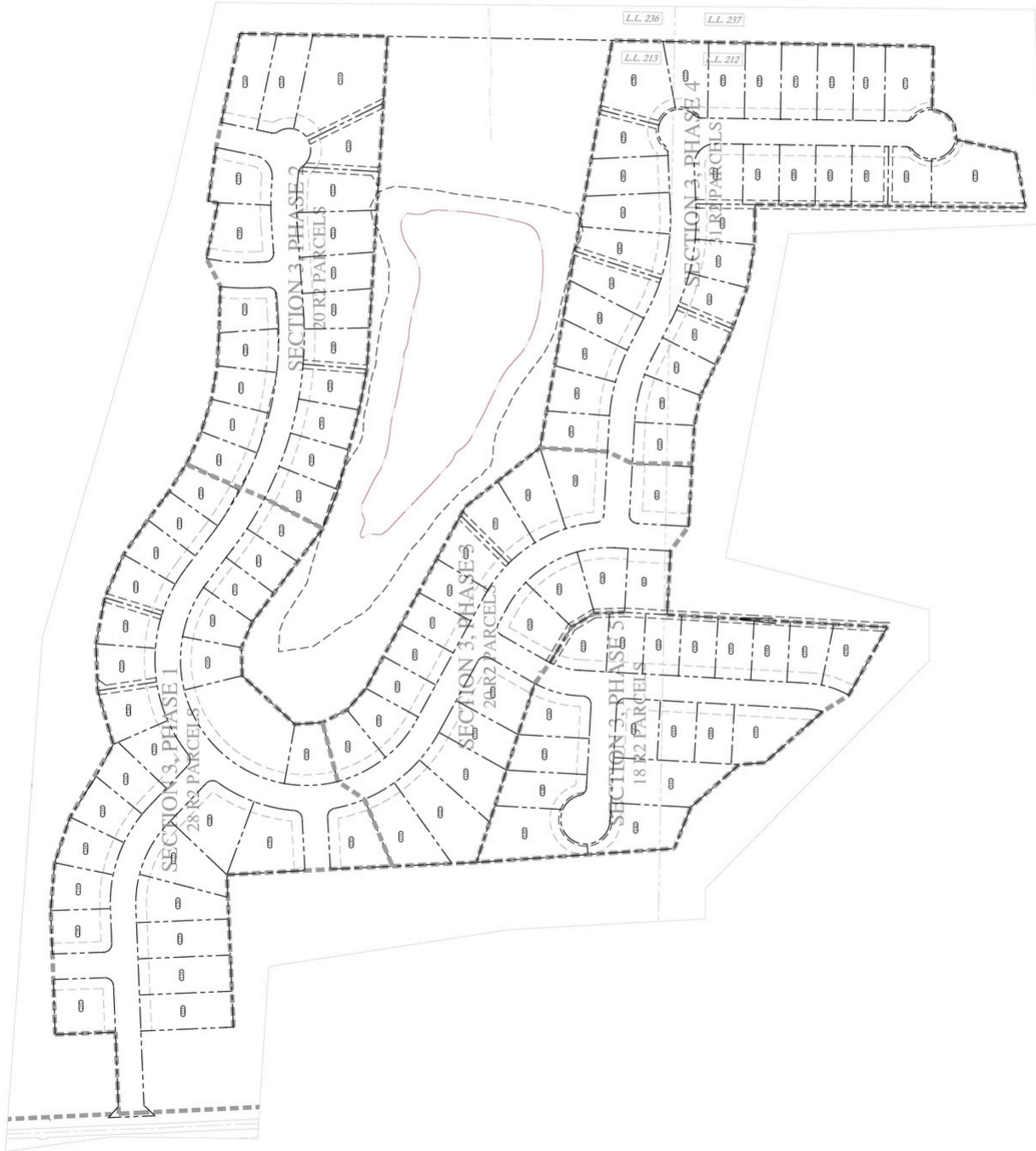
NOTE:  
TEMPORARY CUL-DE-SACS WILL BE REQUIRED BETWEEN PHASING IF THEY CREATE A TEMPORARY DEAD-END STREET.

# Planter's RIDGE

PLANNED AMENITY AREA WITH OUTDOOR  
PAVILION, MULTI-AGE PLAYGROUND, SPLASH PAD,  
AND GREEN SPACE OVERLOOKING  
BEAUTIFUL TALTON POND



THE BANKS AT  
*Planter's*  
RIDGE



THE BANKS AT PLANTER'S RIDGE

# THE BANKS AT *Planter's* RIDGE



Starting in the low \$400's!

## THE EMORY

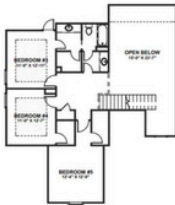
AT THE BANKS AT PLANTER'S RIDGE



OPTION A



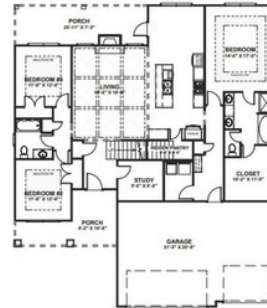
OPTION B



5 BEDROOMS 2529 SQFT

## THE EVERLY

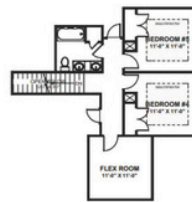
AT THE BANKS AT PLANTER'S RIDGE



OPTION A



OPTION B



5 BEDROOMS STUDY FLEX ROOM 2529 SQFT

## THE HARLOW

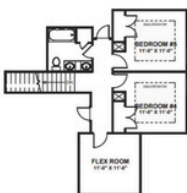
AT THE BANKS AT PLANTER'S RIDGE



OPTION A



OPTION B



5 BEDROOMS FLEX ROOM 2403SQFT

## THE NOVA

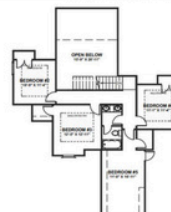
AT THE BANKS AT PLANTER'S RIDGE



OPTION A



OPTION B

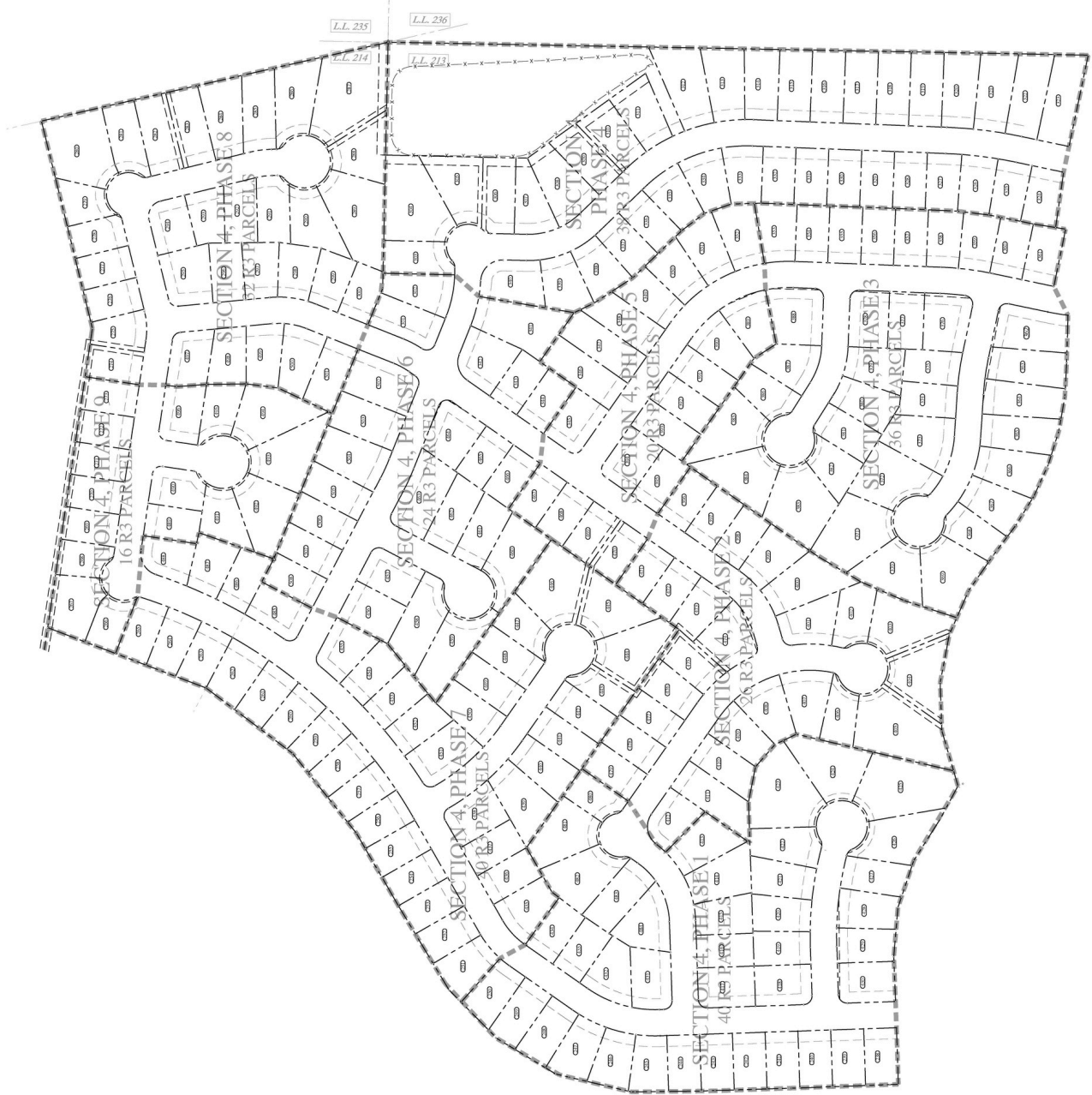


5 BEDROOMS 2529SQFT





# THE FIELDS AT *Planter's* RIDGE



THE FIELDS AT PLANTER'S RIDGE

# THE FIELDS AT *Planter's* RIDGE



Starting in the low \$300's!

## THE ALPINE

AT THE FIELDS AT PLANTER'S RIDGE

OPTION A



OPTION B



OPTION C



4 BEDROOMS 1769 SQFT

## THE AMORA

AT THE FIELDS AT PLANTER'S RIDGE

OPTION A



OPTION B



OPTION C



4 BEDROOMS 1947 SQFT

## THE APILLA

AT THE FIELDS AT PLANTER'S RIDGE

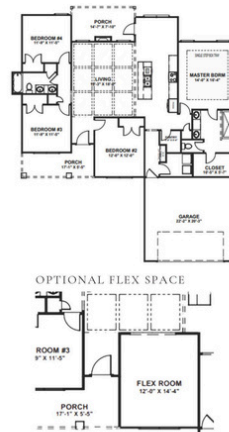
OPTION A



OPTION B



OPTION C



4 BEDROOMS 1857 SQFT

## THE LENNON

AT THE FIELDS AT PLANTER'S RIDGE

OPTION A



OPTION B



OPTION C



4 BEDROOMS 1856 SQFT

## THE MEMPHIS

AT THE FIELDS AT PLANTER'S RIDGE

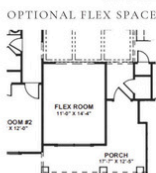
OPTION A



OPTION B



OPTION C



4 BEDROOMS 1769 SQFT

## THE SIMON

AT THE FIELDS AT PLANTER'S RIDGE

OPTION A



OPTION B



OPTION C



4 BEDROOMS 1951 SQFT

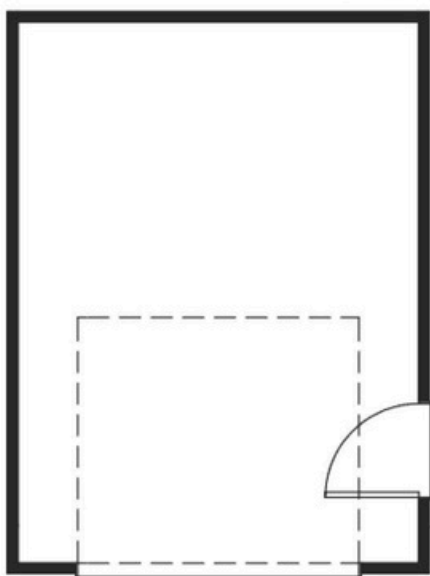


# Planter's RIDGE

Shops can be added at an additional price.  
See below to see the shop we offer.

## STANDARD SHOP

AT PLANTER'S RIDGE



12' X 16'



# *Our* PROCESS



# 1

## Meeting our clients

After making the decision to build a new home, you will speak to one of our representatives who will help you decide what your budget is and where exactly you want to build. We have 5 realtors who can help make this process easy and can answer any questions and concerns you have about building your new home.



# 2

## Selecting a Lot and Creating Your Dream Home

After deciding where you'd like to build, you will be able to select the floor plan and lot that you want and work with our designers about everything you want in a home. From exterior to interior, you make every decision on what you want for your dream home. After you've made your selections, you sit back while we build your home. Your realtor will be able to keep you updated on the progress and any questions you have.



# 3

## Closing on Your New Home

Your house is built and it's time to get your keys and close. You will be provided with a closing folder filled with info about your home, keep this folder to refer back to as you may need to know the color of your walls in a few years. All contact information will be provided in the folder for any future need.

Your home is finished and now you can relax... after you move in and unpack everything, of course.





Misty Wingate



**WRG**  
Real Estate

☎ 478-256-0395

✉ mwingate73@gmail.com



Ilia Durham



☎ 478-808-1298

✉ iliadurham.realtor.com



Ceirra Johnson

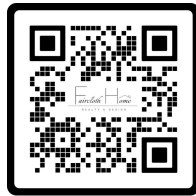


☎ 478-390-5832

✉ ceirra@sayyes2theaddress.com



Brandi Faircloth



☎ 678-428-5604

✉ youragentbrandi@gmail.com



Laura Branham



☎ 478-951-9617

✉ laura@landmarkperry.com



*Meet*  
**OUR TEAM**

*Our*

# PREFERRED LENDER

When buying a home with WCH, you have the freedom of choosing your own lender, but we can also help you.

We offer a Lender Credit, to be applied towards closing costs, when you choose our preferred lender. Ask one of our team members about the Lender Credit!



"My name is Melissa Gibson, and I am proud to work with the community. As a highly-skilled Lender, NMLS #279702, my goal is to provide the best customer service possible along with knowledgeable, unbiased advice."



Melissa Gibson  
Middle GA Market Leader | NMLS #279702  
☎ 770-337-8089  
✉ [melissa.gibson@academymortgage.com](mailto:melissa.gibson@academymortgage.com)



# Planter's RIDGE



*Let's stay in touch*

WCH Homes  
817 GA-247, S  
Unit #10  
Kathleen, GA 31047  
478-322-0028  
[www.wchhome.com](http://www.wchhome.com)

